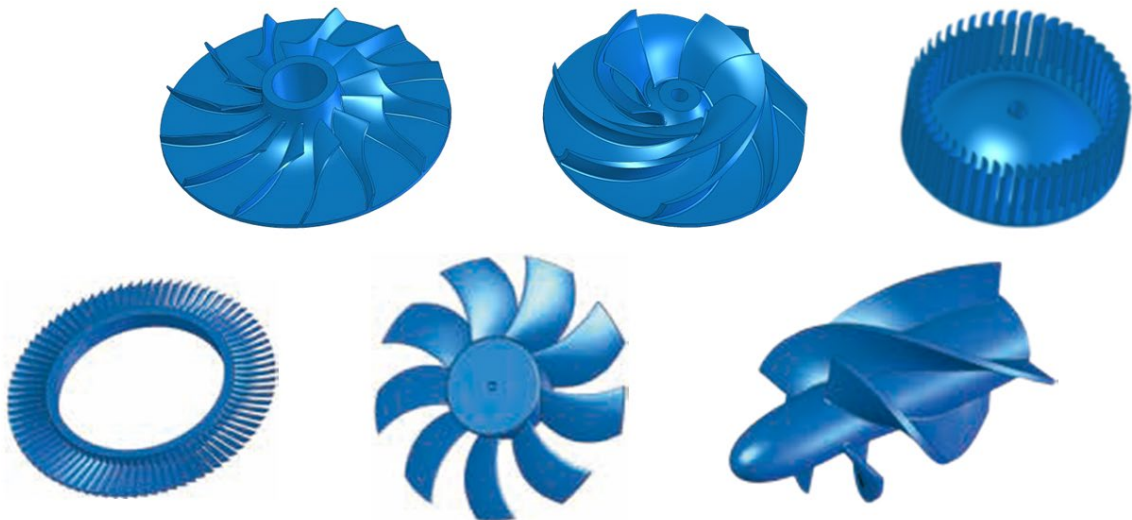
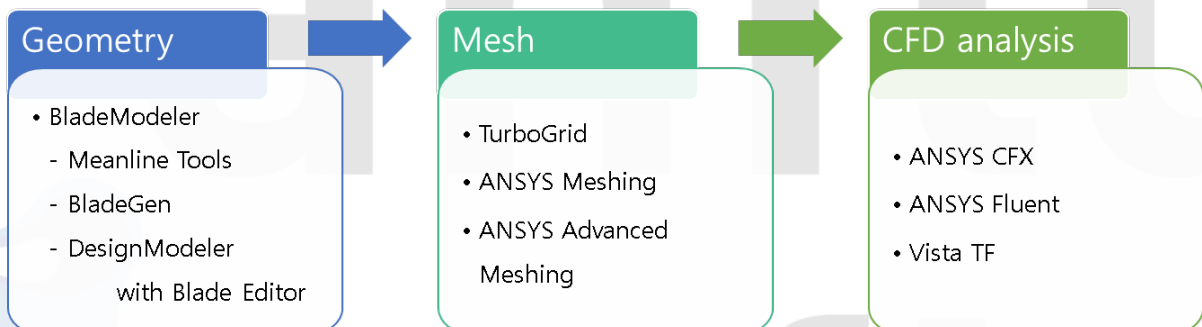


ANSYS BladeModeler

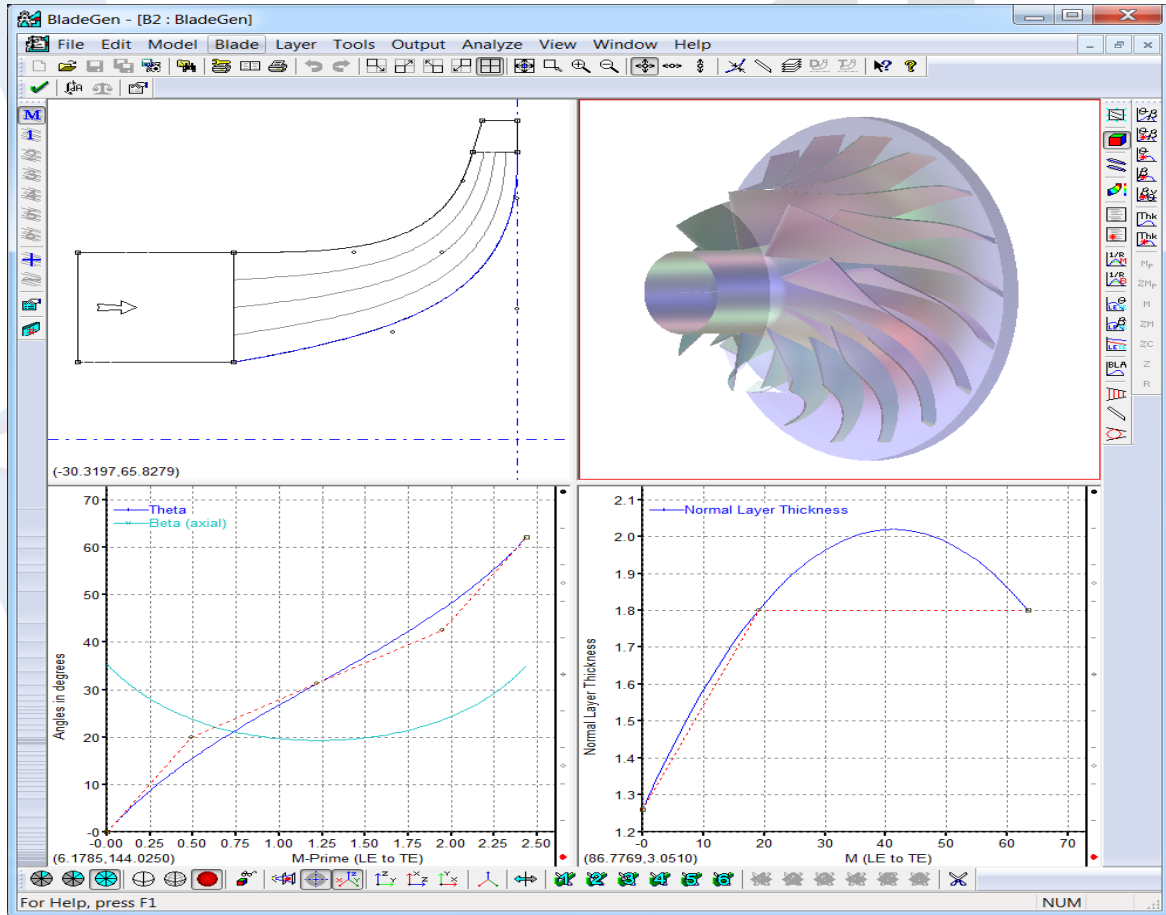
ANSYS BladeModeler는 터보기계 구성품의 빠르고 쉬운 3D 설계를 위한 최적의 제품입니다. Ansys BladeModeler는 Ansys DesignModeler와 통합되어 완벽한 3-D 기하학 모델링 기능을 제공하며 허브 메탈, 블레이드 필렛, 컷오프 및 트림추가 등 모든 기하학적 형상을 모델링할 수 있습니다.



[ANSYS Turbo System Workflow]

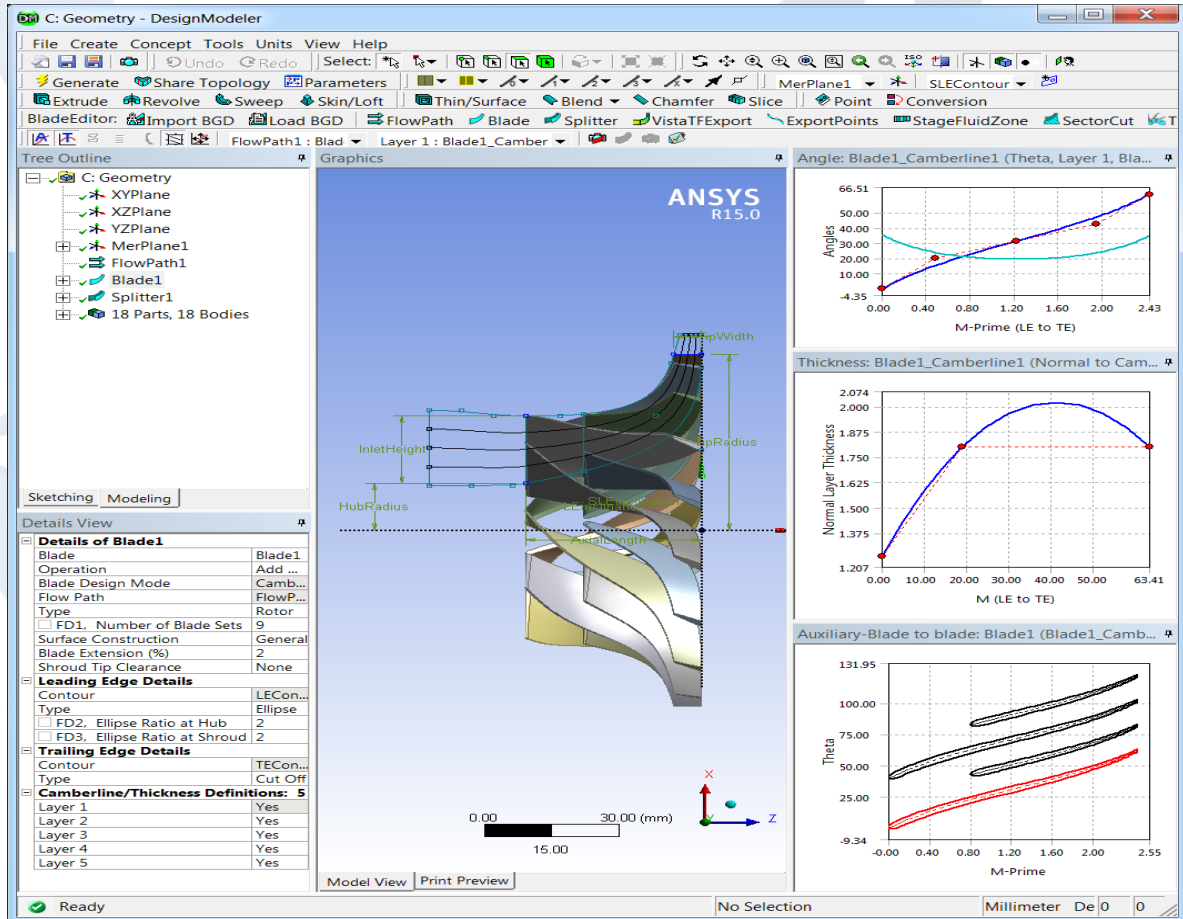


- BladeGen 사용 환경



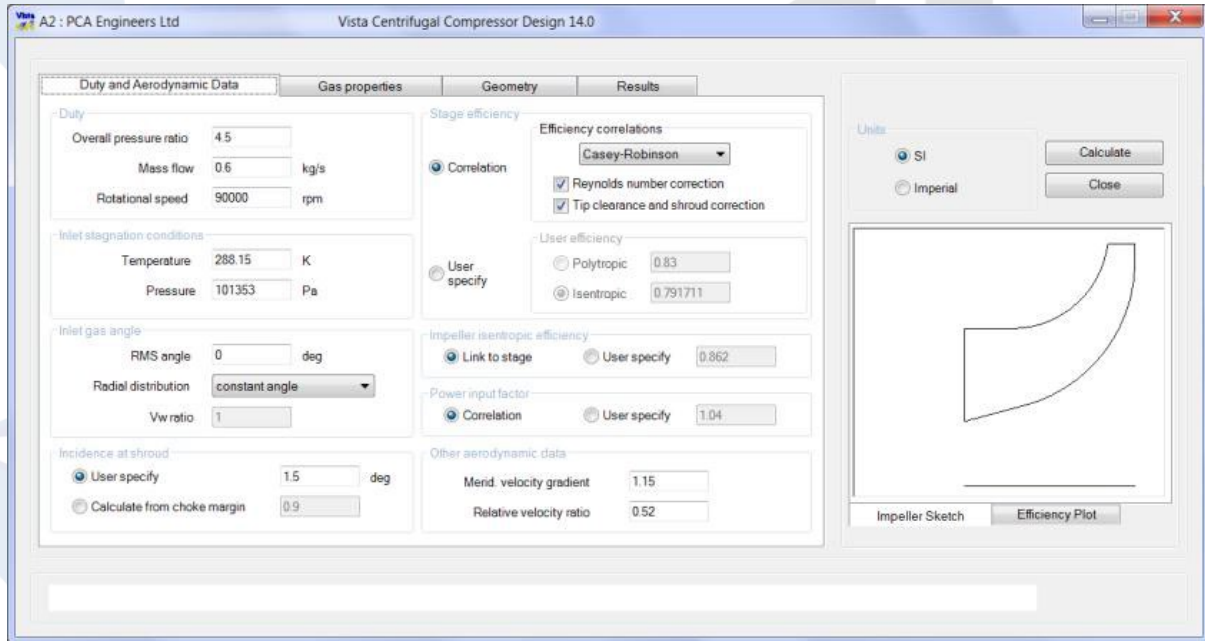
- ✓ Define machine geometry
 - Meridional flow path definition
 - Blade definition on spanwise layers
- ✓ Leading/Trailing Edge definition
- ✓ Blade Trimming
- ✓ Report generation
- ✓ Geometry modification
 - User can start from Built in 1D sizing tools, Templates, Data Files, CAD (iges)

- BladeModeler 사용 환경 (DesignModeler add-on)



- ✓ Most parameters can be exposed in Workbench for design exploration/optimization
- ✓ Provides geometry connection between BladeGen and DesignModeler
- ✓ Allows for the import of multiple BladeGen models into one DesignModeler session
- ✓ Allows for easy editing of blade geometry
- ✓ Components from another CAD source can be imported and combined with blade geometry (i.e. A volute)

- Vista 사용 환경 (Vista CCD)



- ✓ Meanline Sizing Tools
 - Vista AFD (Axial Fan Design)
 - Vista CCD (Centrifugal Compressor Design)
 - Vista CPD (Centrifugal Pump Design)
 - Vista RTD (Radial Turbine Design)
- ✓ Provide initial geometry from performance requirements
- ✓ Output to BladeGen, DesignModeler
BladeEditor or Vista TF
- ✓ Example of Vista CCD on next slides